



OurCounty

OurCounty Plan: 2023 Priorities and Initiatives

LA County Chief Sustainability Office

February 1, 2023

Background

Los Angeles County Chief Sustainability Office



The Chief Sustainability Office provides comprehensive and coordinated policy support and guidance for the Board of Supervisors, County departments, the unincorporated areas, and the region to make our communities healthier, more liveable, economically stronger, more equitable, more resilient, and more sustainable.

What's in the plan?

The County's Aims & Roles for its Sustainability Plan



The plan is:

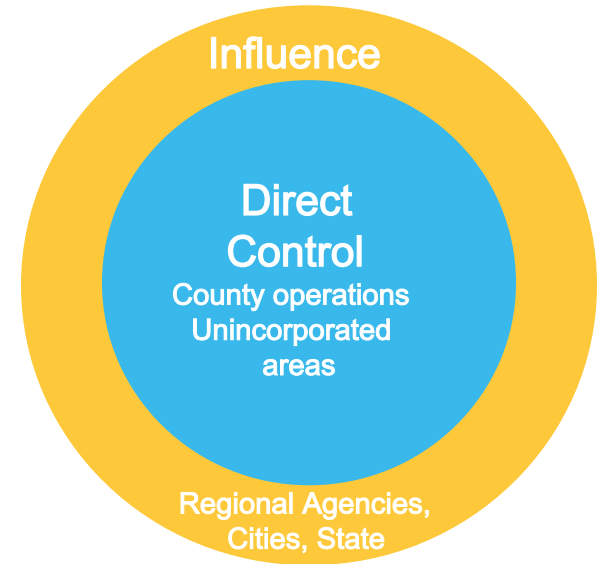
- Aspirational, Comprehensive, Long -Term, Regional, Actionable

Plan is analogous to a strategic plan

- Sets out a vision and strategy, but does not include detailed implementation guidance.

Plan mostly addresses areas of County's control

- Does include some areas where we can influence others (Metro, South Coast AQMD, etc.)



Goals

Broad statement of a desired future state

“Thriving ecosystems, habitats, and biodiversity.”

Strategies

More specific statement on the approach to achieve the goal

“Preserve and enhance open space, waterways, and priority ecological areas.”

Actions

Detailed statements on the policy or program to fulfill the strategy

“Develop a Countywide parks and open space master plan to acquire, preserve, restore, and protect available open space areas, and improve public access to open space, especially for residents in high park need areas.”

High Level Goals



Resilient and healthy community environments where residents thrive in place



Buildings and infrastructure that support human health and resilience



Equitable and sustainable land use and development without displacement



A prosperous LA County that provides opportunities for all residents and businesses and supports the transition to clean economy sectors



Thriving ecosystems, habitats, and biodiversity



Accessible parks, public lands, and public spaces that create opportunities for respite, recreation, ecological discovery, and cultural activities

High Level Goals



A fossil fuel-free LA County



A convenient, safe, clean, and affordable transportation system that expands mobility while reducing car dependency



Sustainable production and consumption of resources



A sustainable and just food system that enhances access to affordable, local, and healthy food



Inclusive, transparent, and accountable governance that supports participation in sustainability efforts, especially by disempowered communities



A commitment to realize OurCounty sustainability goals through creative, equitable, and coordinated funding and partnerships

Targets



- Numeric targets tied to strategies set for short term (2025), medium term (2035), and long term (2045) unless end point is achieved earlier.
- Targets are set countywide as well as for unincorporated areas and/or County facilities and operations as appropriate.

Strategy 5B	Targets
Preserve and enhance open space, waterways, and priority ecological areas	<p>Baseline 64.4% of LA County land was classified as natural area but only 34.9% of LA County land was protected as of 2018.</p> <p>Countywide:</p> <p>2025</p> <ul style="list-style-type: none">• Increase to 55% the percentage of protected natural areas <p>2035</p> <ul style="list-style-type: none">• Increase to 65% the percentage of protected natural areas <p>2045</p> <ul style="list-style-type: none">• Increase up to 70% the percentage of protected natural areas

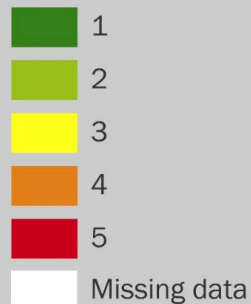
Example Action: Just Transition



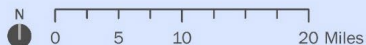
Action 59: Collaborate with the City of Los Angeles and others to develop a “Just Transition” plan and task force that examines the impact of the transition to a cleaner economy on disadvantaged workers, identifies strategies for supporting displaced workers, and develops recommendations for ensuring inclusive employment practices within growth sectors of the economy.

Horizon	Short Term
Sphere of influence	Direct, Indirect
Lead County entity	Chief Executive Office
Partners	City of Los Angeles, DCBA, DRP, Labor Unions, DPR, LAEDC, WDACS
Topic Tags	Climate, Economy & Workforce, Energy, Equity, Public Health

Hazard Proximity and
Sensitivity Score
by Census Tract,
Los Angeles County



Pacific Ocean



- Home to 50% of all census tracts in the state that the State of California deems to be the most disadvantaged (95th percentile or higher per CalEnviroScreen)

Source: USC PERE

What do we mean by equity?



“Equity is an end state in which all groups have access to the resources and opportunities necessary to improve the quality of their lives”

The plan uses the following framework:

- Procedural Equity
 - Inclusive authentic engagement and representation in the processes are used to develop plans, policies, and programs
- Distributional Equity
 - Policies and program result in the fair distribution of benefits and burdens
- Structural Equity
 - Decisions are made with a recognition of the historic, cultural, and institutional structures and dynamics that have led to current inequities
- Transgenerational Equity
 - Decisions consider generational impacts and don't create unfair burdens for future generations

We must also acknowledge and address inequities that already exist as a result of structural racism that has deliberately harmed communities of color.

Implementation

Board Direction on Implementation

- Declared Sustainability to be a new Board Directed Priority (1 of 7)
- Directed that performance evaluations of department heads include how they are implementing the plan
- Directed CSO to annually develop set of priorities to inform budget process and to identify state, federal, and private funding sources to support plan implementation
- Directed CSO to annually report on plan progress
- Directed CSO to align County's legislative advocacy with the plan



2022/ 23 CSO Priorities



- Urban Forest Management Plan (Action 43)
- Just Transition for oil and gas (Action 59)
- Building Decarbonization (Action 85)
- Single Use Plastics ordinance implementation (Action 107)
- Food Equity Roundtable
- Climate Resilience Initiative



What is Vulnerability?

Climate Vulnerability

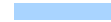
Exposure

The nature and degree to which a system or sub-population is exposed to significant climatic variations.



Sensitivity

The degree to which a system or sub-population is affected by climate-related stimuli.



Adaptive Capacity

The ability of a system or sub-population to adjust to climate change, to moderate potential damages, or to cope with the consequences.

CLIMATE AND ENVIRONMENT

More Than Half Of LA County Residents Will Be Severely Impacted By The Climate Crisis

By Erin Stone

Published Oct 13, 2021 11:15 AM













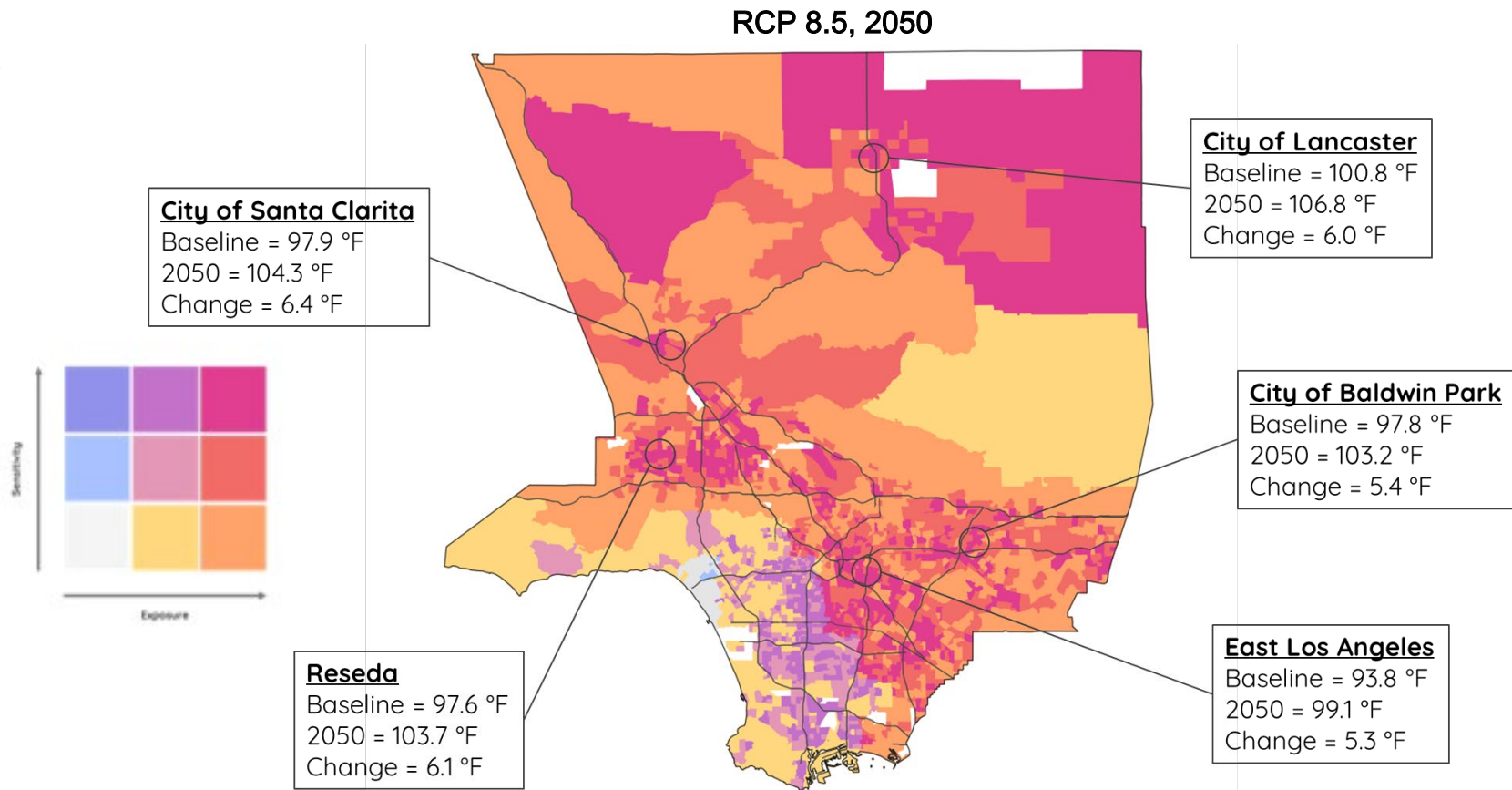
The sun sets over Los Angeles last September as a heat advisory warned temperatures would climb into triple-digits.

(Frederic J. Brown / AFP via Getty Images)

Climate hazards in LA County



		Extreme heat is projected to increase in frequency and severity, impacting much of the County
		Wildfire events are projected to be considerably larger, more frequent, and more destructive by mid -century
		Droughts are happening more often and are lasting longer
		Inland flooding will likely increase in the future with drier springs and summers and wetter winters throughout the state
		Coastal flooding events may become more frequent and severe, even with small increases in sea level rise



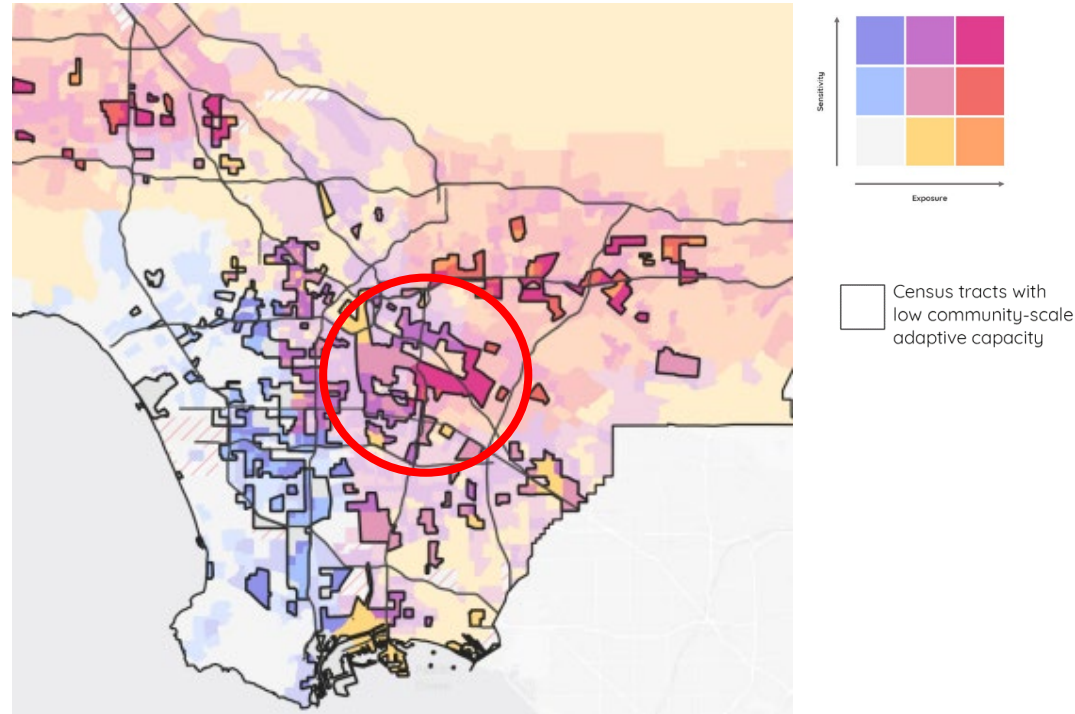
Deep Dive: Extreme Heat Risks to Workers



Heatwaves lead to surges in worker injury:

- More than 1 in 4 heat-exposed workers in LA County lack protections from heat illness and injury, such as paid sick leave or extra break time on hot days
- Many workers fear that reporting incidents related to heat or other climate hazards will lead to retaliation

Distribution of vulnerable, low-capacity communities



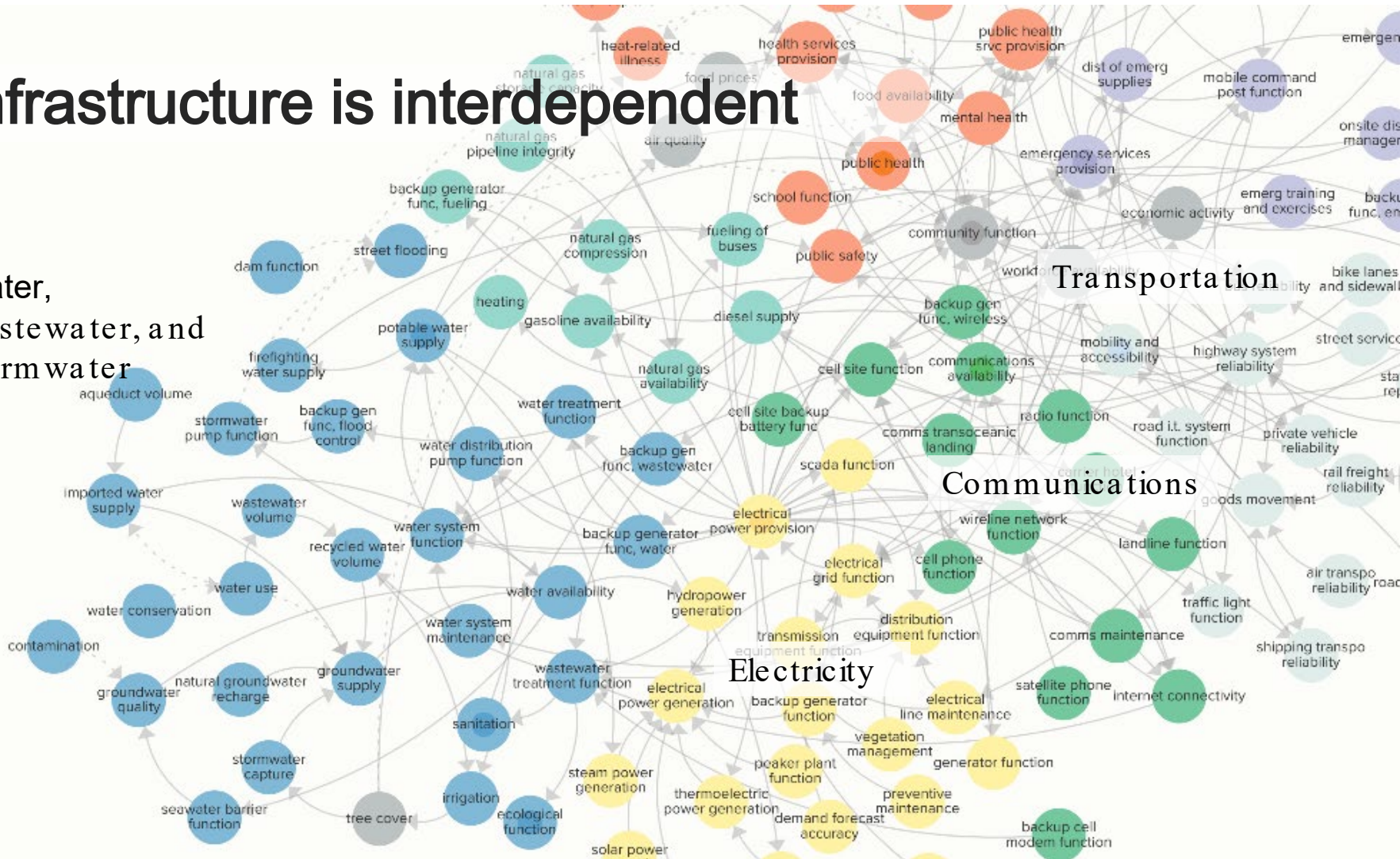
Infrastructure is interdependent

Water,
wastewater, and
storm water

Transportation

Communications

Electricity



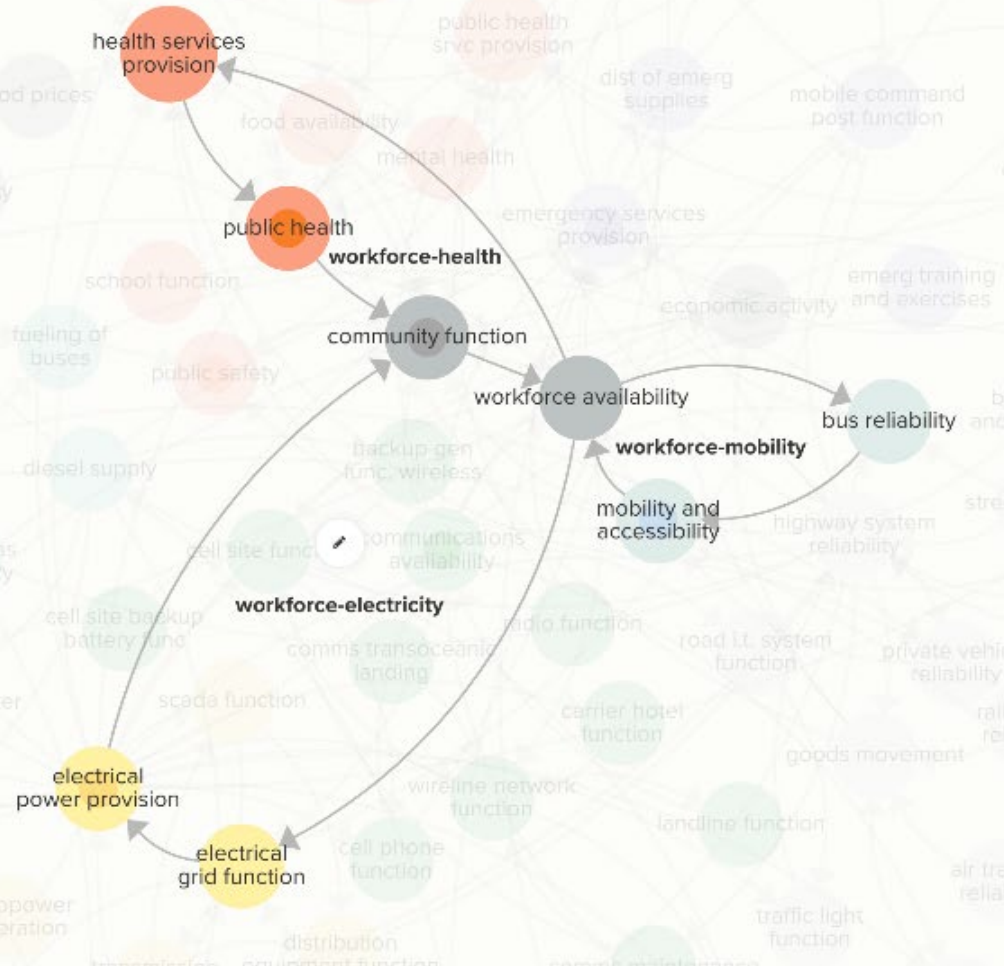
Human impacts of infrastructure disruption



- **Energy disruptions** can disproportionately impact socially vulnerable populations
- During climate disasters, vulnerable populations need more **accessible communication platforms** (text, WhatsApp, language media) as well as messaging through trusted networks (day laborer centers, CERT neighborhood leaders, town councils, and caregivers)
- **Parks and open space, trees, and access to cooling infrastructure** are critical and key to adaptive capacity while also vulnerable to heat, wildfire, and drought

Workforce availability is central

- Workforce availability mediates almost every interaction in the network
- Workers are essential not just to the services they help provide, but to the functioning of the whole community system



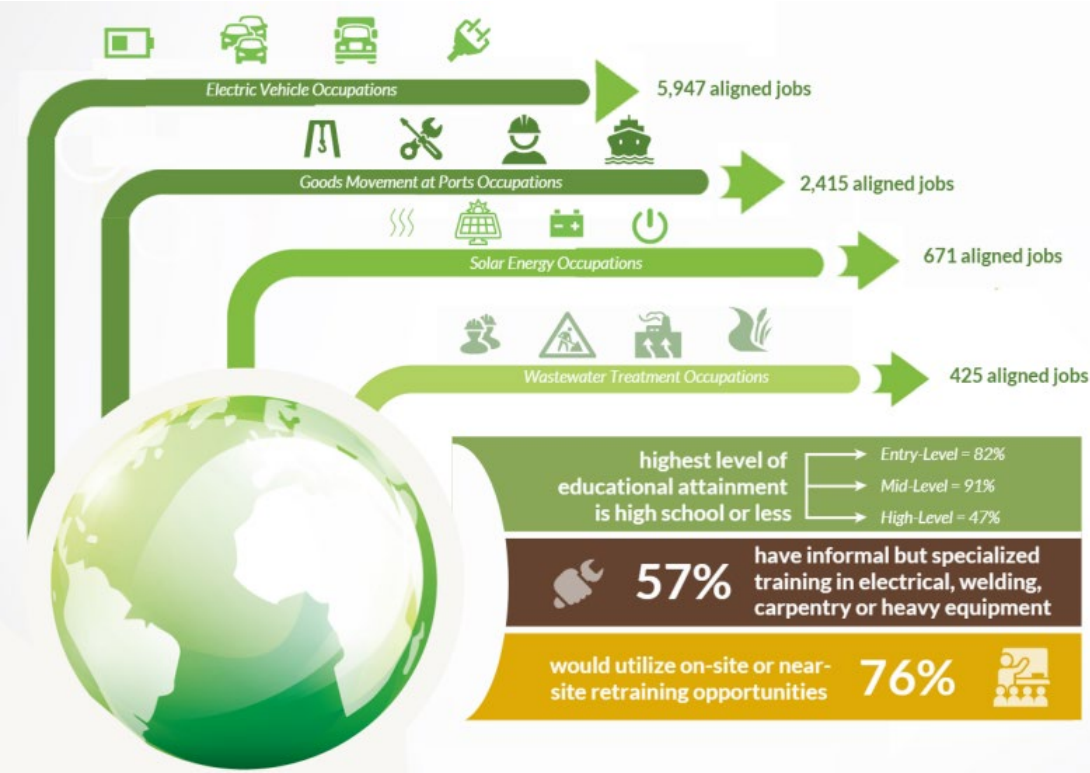
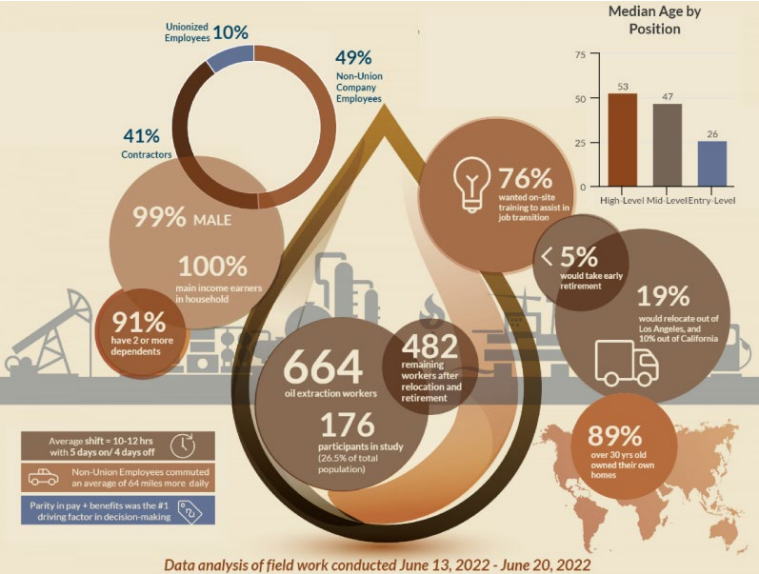
Just Transition Task Force



- County motion to phase out oil drilling adopted in September 2021 (ordinance adopted in January 2023)
- County partnered with City to convene Task Force to create recommendations
- Strategy was released December 2023



Just Transition Task Force



Food Equity Roundtable

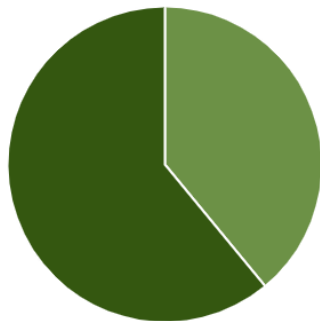


- Built on work and lessons learned by the County during the pandemic
- In February 2021, Board directed CSO to create structure for long-term collaboration with cross-sector stakeholders to address root causes of food insecurity
- Effort is co-funded by philanthropic partners: Annenberg Foundation, California Community Foundation, and Weingart Foundation

(%) of LA County adults who remained food insecure in the first 6 months of 2021

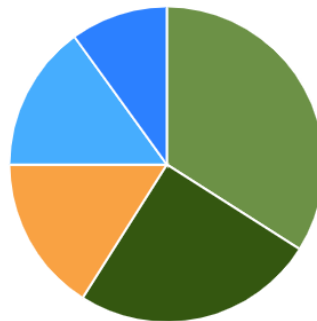
By Gender

● Male
● Female



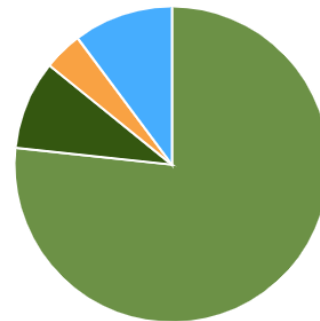
By Age

● 18 – 30 years
● 31 – 40 years
● 41 – 50 years
● 51–64 years old
● 65+ years old



By Race

● Hispanic/Latinx
● White
● Black/African American
● Asian



Food Equity Roundtable



Goal 1

Improve Affordability of Healthy Foods



Goal 2

Increase Equitable Access to Healthy Foods



Goal 3

Build Market Demand and Consumption of Healthy Food



Goal 4

Support Sustainability and Resilience in Food Systems and Supply Chains

+ Objective 1: Modernize the Food System

+ Objective 2: Build a Smart & Connected Food System

+ Objective 3: Adopt a Dignity of Service Approach

+ Objective 4: Elevate Food as Medicine

+ Objective 5: Bolster Nutrition Education & Support Healthy Eating

+ Objective 6: Champion a Whole Person, Whole Community Approach

– Objective 1: Modernize the Food System

STRATEGY 1.1: Support the growth of healthy food by promoting local farmers and urban agriculture alongside the consistent innovation of growing practices to meet evolving demands

STRATEGY 1.2: Increase efficiencies in food waste management and edible food recovery

STRATEGY 1.3: Adopt innovative approaches to addressing mobility barriers for end consumers with a focus on divested neighborhoods

STRATEGY 1.4: Make the food system more inclusive of small and minority-owned food suppliers and retailers

STRATEGY 1.5: Build resilience by shortening and diversifying supply chains and promoting climate-friendly food

– Objective 2: Build a Smart & Connected Food System

STRATEGY 2.1: Connect and leverage multiple data sources to build a comprehensive shared understanding of the local food system

STRATEGY 2.2: Identify and address bias in food system data

STRATEGY 2.3: Invest in data and technology solutions to connect food supply chain partners to drive further efficiency in food waste and recovery management

STRATEGY 2.4: Streamline access to and improve navigation of nutrition programs, food resources, and services

– Objective 6: Champion a Whole Person, Whole Community Approach

STRATEGY 6.1: Enhance and expand quality after-school care programs and daycare centers

STRATEGY 6.2: Fortify collaboration across all sectors that support safety net programs, ensuring that each person is receiving all the benefits they are eligible for

STRATEGY 6.3: Strengthen the workforce development and employment opportunities in private, public, and nonprofit, sector food system jobs and industries



[OurCountyLA.org](https://www.OurCountyLA.org)